



Inspiring Spaces, Elevated Living
95A Gurugram





THE RISING PALM FLOORS



The Rising Palm is introducing Gurgaon's first low rise homes that come equipped with world class amenities, including a 24/7 security desk, gymnasium, children's play area, open theatre and more. This is an unparalleled housing project that offers luxury, comfort and a slice of nature amidst the city.

Whether you're a young family, working professional or retiree on the lookout for your 'forever home', these advanced houses will be your priority due to their exceptional amenities and unique connection to nature.



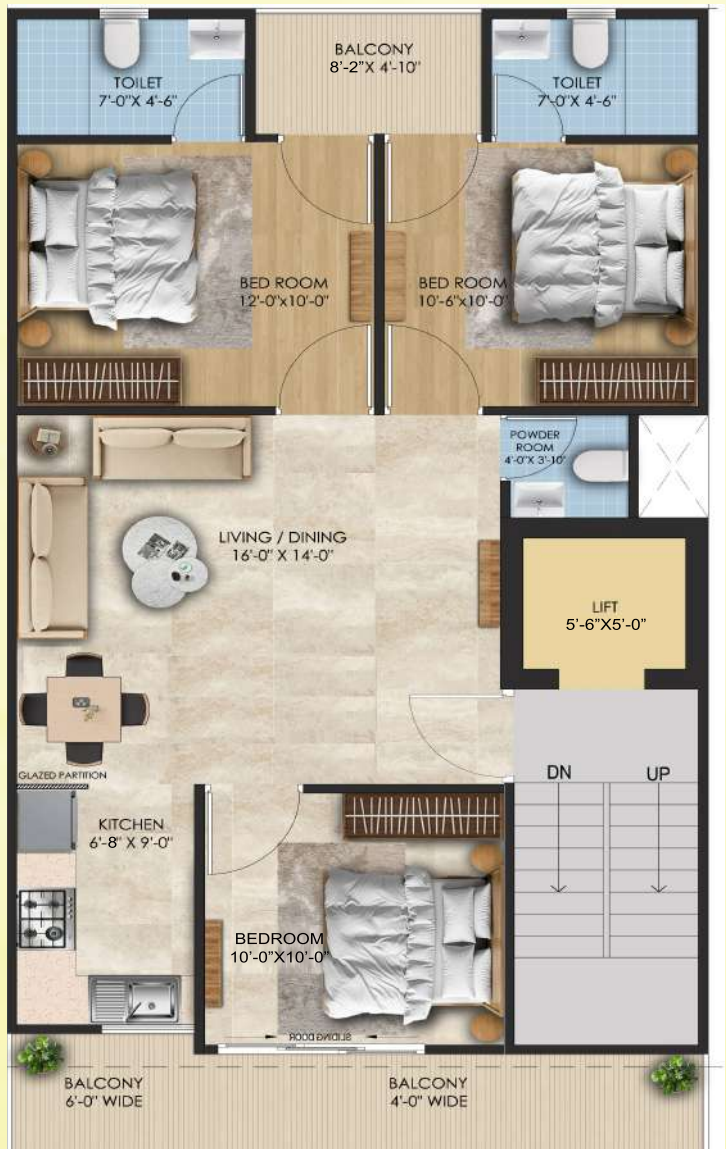
FLOOR PLAN

TYPE A (3BHK+3T)



TYPICAL FLOOR PLAN (FIRST TO FOURTH)

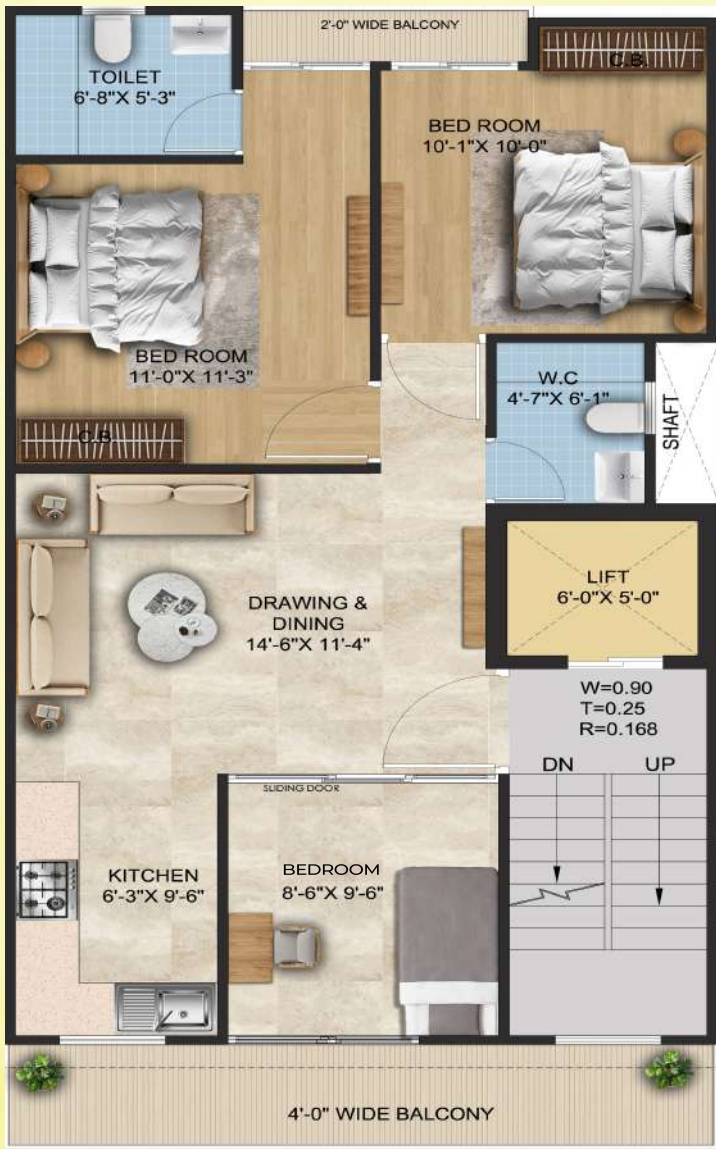
TYPE B (3BHK+3T)



TYPICAL FLOOR PLAN (FIRST TO FOURTH)

FLOOR PLAN

TYPE C (3BHK+2T)



TYPICAL FLOOR PLAN (FIRST TO FOURTH)

TYPE D (2.5BHK+2T)



TYPICAL FLOOR PLAN (FIRST TO FOURTH)

SPECIFICATIONS

ARCHITECTURAL WORK

STRUCTURAL DRAWINGS

OVERLAPPED STRUCTURAL ARCHITECTURAL & MEP DRAWINGS

MEP DRAWINGS

ELECTRICAL LAYOUT
PLUMBING WATERLINE LAYOUT
PLUMBING DRAINAGE LAYOUT

SALIENT FEATURES

EARTHQUAKE RESISTANT STRUCTURE
EARTHING PROTECTION
SOIL QUALITY ASSESSMENT

CIVIL WORK

STELL

RATHI / KAMDHENU

WALLS

AAC BLOCKS - BIRLA / GODREJ

SAND

YAMUNA (FINE SAND)

DUST

WHITE ATELA
FINE DUST

AGGREGATE

20mm & 10mm BLUE AGGREGATE

WATER PROOFING

PIDLITE / DR. FIXIT 306

CEMENT

ULTRATECH / ACC

Standard for Brands We Choose or Their Equivalents



FINISHING

DOORS

FLUSH DOOR IN PINE WOOD
UPVC - OKOTECH / PROMINANCE

WINDOWS

UPVC SLIDING WINDOW WITH TOUGHENED GLASS- OKOTECH ISI

HARDWARE

OZONE / GODREJ
S.S HINGE 304 / DORSET

GYPSUM

FALSE CEILING - USG BORAL / SAKARNI

POP

WALL PUNNING
SAKARNI

PAINT

ASAIN PAINTS / DULUX
(PLASTIC PAINT / ROYALE / VELVET)
EXTERIOR ULTIMA / APEX

FLOORING & WALL TILES

STAIR CASE AND FOYER AREA

GRANITE / SADAR ALI

BALCONY SIT OUT PASSAGE AREA

VITRIFIED PLANK TILES
KAJARIA

ROOMS

TILES
WOODEN FLOORING- GREENPLY / ACTION TESA

PARKING

GRANITE / SADAR ALI

LIVING & DINING

VITRIFIED TILES
KAJARIA

Standard for Brands We Choose or Their Equivalents



ELECTRICAL

CONDUIT

ASTRAL / SETIA

MAIN DB & MCB

LEGRAND / HAVELLS

WIRES

POLY / HAVELLS

V.D.P-VIDEO DOOF PHONE

HIKVISION / CP PLUS

LIGHTS AND POWER POINT

ORIENT / SYSKA / HAVELLS

SWITCHES AND SOCKETS

HAVELLS

A/C PROVISION

MANDEV COPPER PIPE WITH DRAIN PIPE ASTRAL

PLUMBING

CPVC

ASTRAL

PVC

PRAKASH / PRINCE

OVER HEAD TANK

SINTEX / SHEETAL ISI

MISCELLANEOUS

MAIN PARKING DOOR, STAIR CASE RAILING, BALCONY RAILING

SS 304 JINDAL, MS

Standard for Brands We Choose or Their Equivalents



KITCHEN

SINK

SS 304
SINGLE BOWL

FLOOR TILES

VITRIFIED FLOORS TILES
KAJARIA

KITCHEN COUNTER TOP / KITCHEN WALL TILE

ANTI SPLASH VITRIFIED TILES- NANO / COMPOSITE MARBLE

BATHROOM

TOILET FLOOR

ANTI SKID VITRIFIED TILES KAJARIA

TOILET WALL DADO (FULLHEIGHT)

VITRIFIED WALL TILES WITH HIGHLIGHTER
KAJARIA

CP & SANITARY FIXTURES

JAQUAR

Standard for Brands We Choose or Their Equivalents





Developed By:

BrickSquare Developers Pvt. Ltd.
Unit no. 409-412, 4th floor, Crosswalk
sector 93, gurgaon, Haryana-122505

✉ info@therisingpalm.com

🌐 www.therisingpalm.com

☎ +91-72 9009 9005, 0124-4048289

📷 therisingpallofficial

This brochure is intended solely for informational purposes and does not constitute a legal offer or contract. All images, floor plans, and illustrations used in this brochure are artistic impressions and are indicative only. The actual project may vary due to design, construction, or regulatory changes. The developer reserves the right to modify, alter, or change any aspect of the project without prior notice. All information, including but not limited to prices, dimensions, amenities, and specifications, is subject to change. Buyers are advised to verify all details independently before making any decisions.